

Securing Your Pennsylvania Skill Cabinet

There are two major things to do in order to secure your cabinet, change the factory locks and adjust your padlock bar. The factory locks on the cabinet are for shipping purposes only. It is highly recommended to change these factory locks.

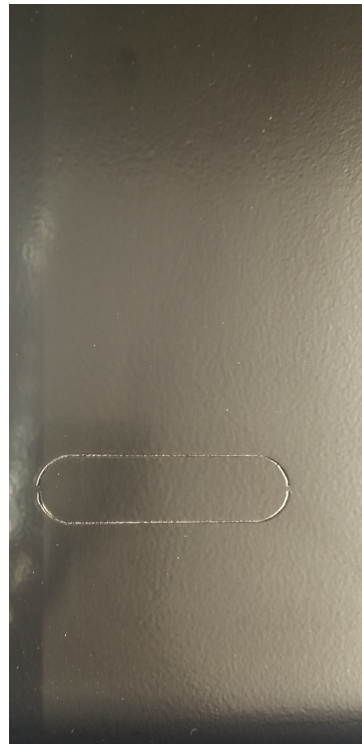
The lock bar for your padlock is adjustable. It is slotted on the back side to allow room for smaller or bigger locks. You want your lock to be as close to the metal door as possible so that the door will not open at all with the padlock on. After adjusting the padlock bar there is a marking on the cabinet to place a set screw to prevent the bar from moving.

In addition to adjusting the lock bar, any games with a horizontal padlock bar will have a punch out or a removable plate on the left side of the cabinet to add an additional padlock bar. Those extra lock bars are available for purchase from Miele Manufacturing for just \$8.00.

Any machines that have the vertical padlock bar will not have a punch out or plate for the second padlock bar. In the near future, we will have a solution available for purchase. Future machine purchases will come with the second padlock bar. Please call technical support for purchases or questions: 570-244-3123.



Adjustment to make padlock tighter to the door



Metal punch out to add second padlock bar



Metal plate that can be removed to add second padlock bar