

Introducing the MSI A3201-S01

In the last couple months, you may have noticed a new motherboard in the machines. This board has several new features. Let's take a look:

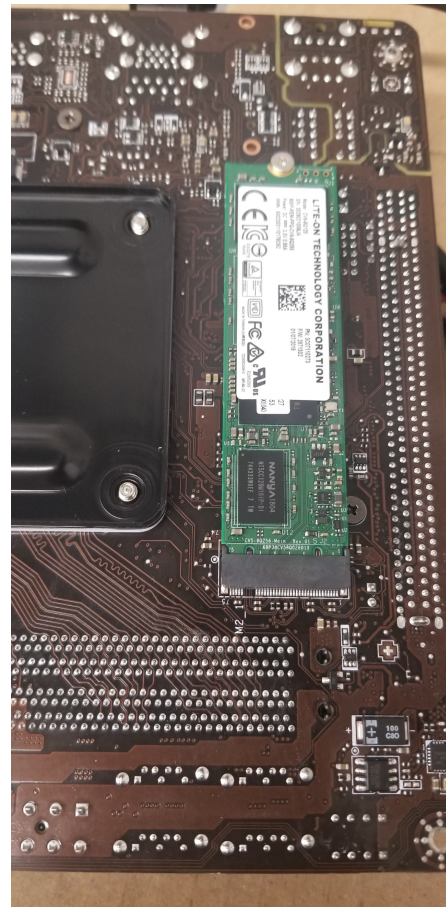
First, it only has an HDMI port for the video signal. Additionally, the new boards use DDR4 RAM instead of DDR3. These RAM types are not compatible, so be sure to specify your board type when ordering replacement RAM.

Another change is the hard drive placement. The hard drive is now located on the backside of the board. The hard drive is also a different hard drive than the older boards. You can remove the hard drive by removing the screw at one end and then sliding it out of the socket. To install a new hard drive, slide it into the empty socket, align it with the screw hole, and replace the screw.

The last big change is the reset button on the board. On the old MSI and ASROCK boards, you had to jump a series of 9 pins to reset the board. Normally, this was necessary when the fan would not start due to the BIOS settings. Now, instead of jumping the pins on the A3201, there is now a button that comes off the board. Press the button to jump the pins. Below are a few pictures to illustrate the new changes:



Pictured: The reset button



Pictured: The Hard drive attached to the back of the board